



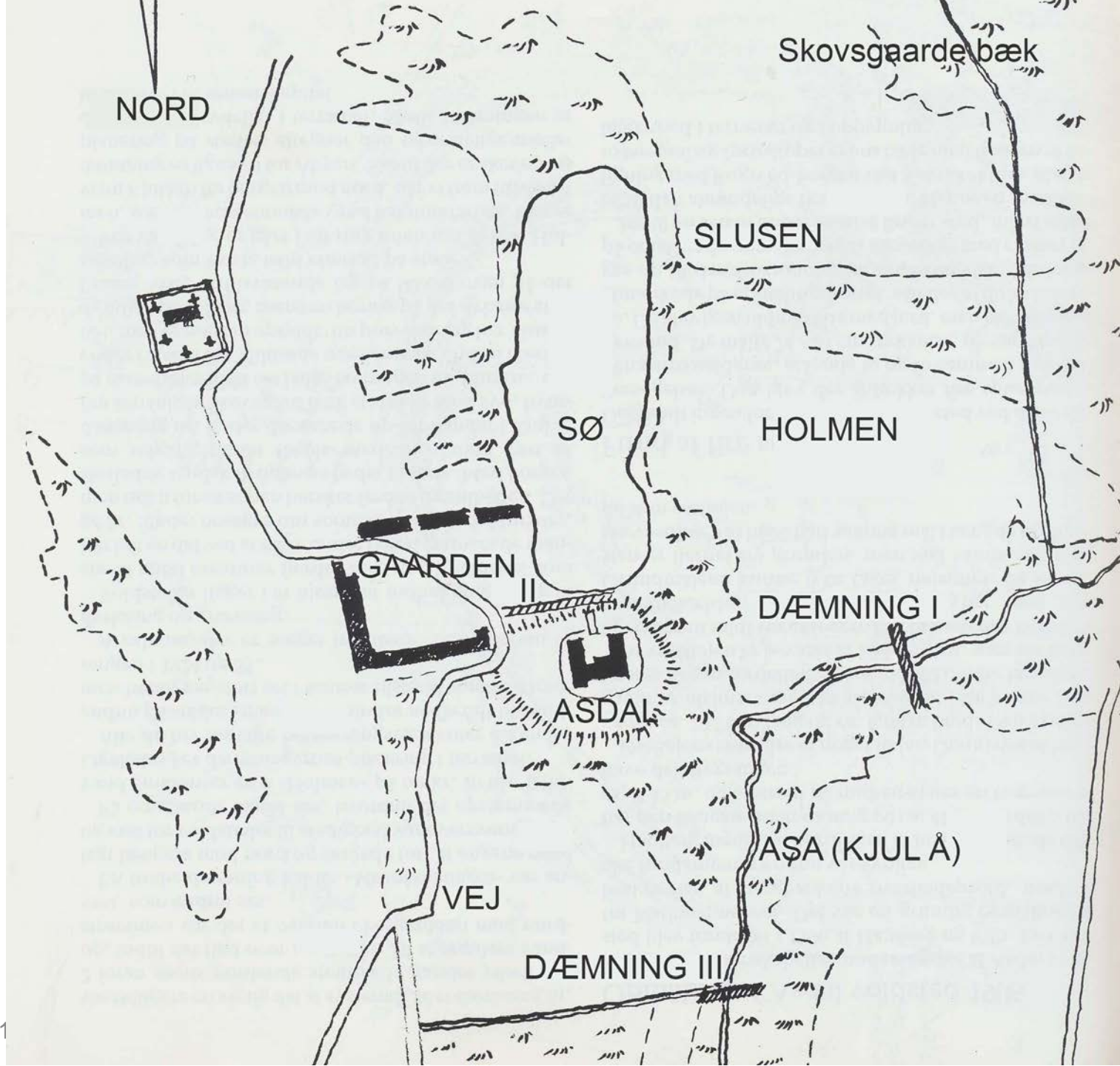
Landbruget i Landskabet er støttet af Landdistriktsmidler og Region Nordjylland.

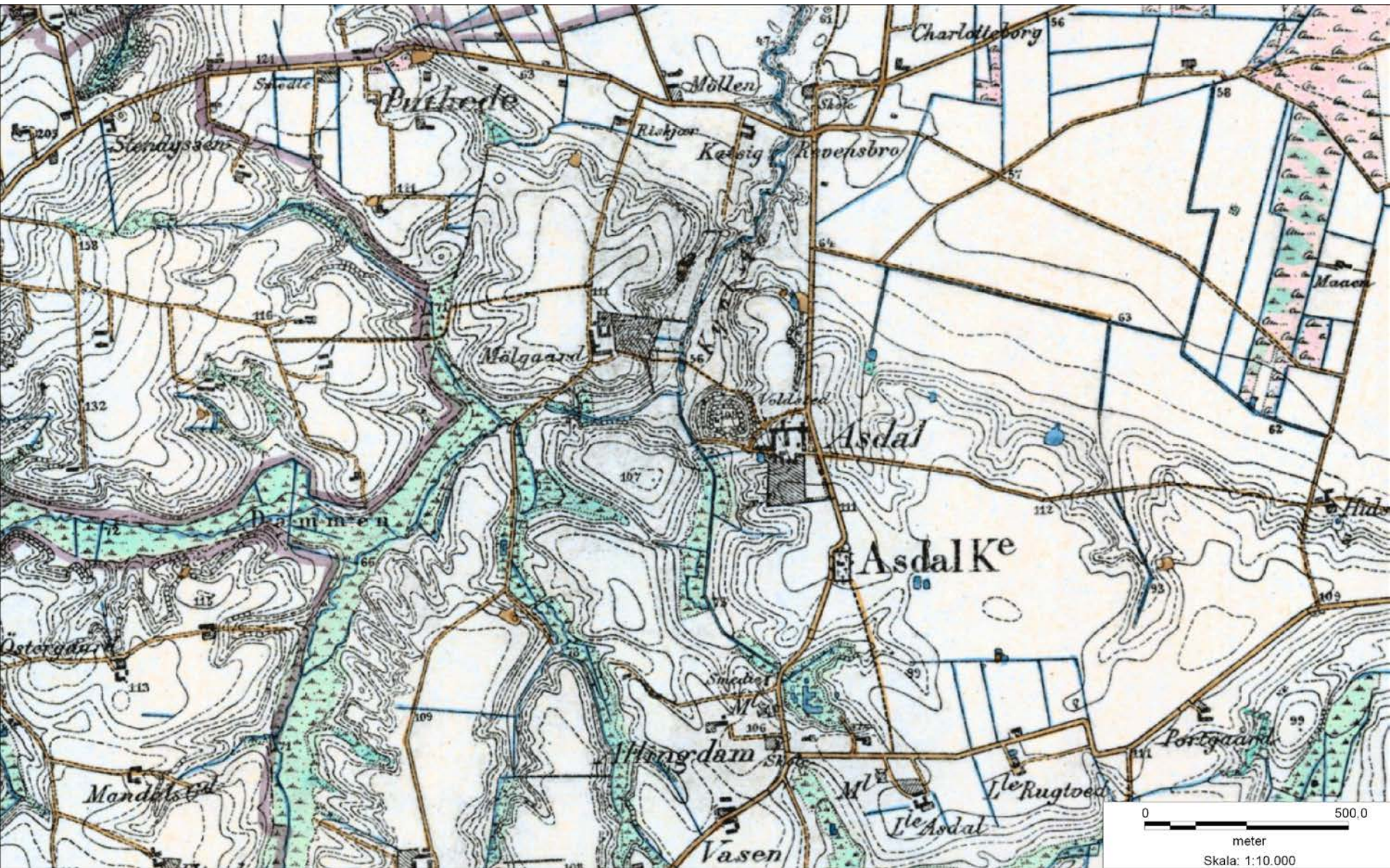
Landskabelige forhold Asdal Hovedgård

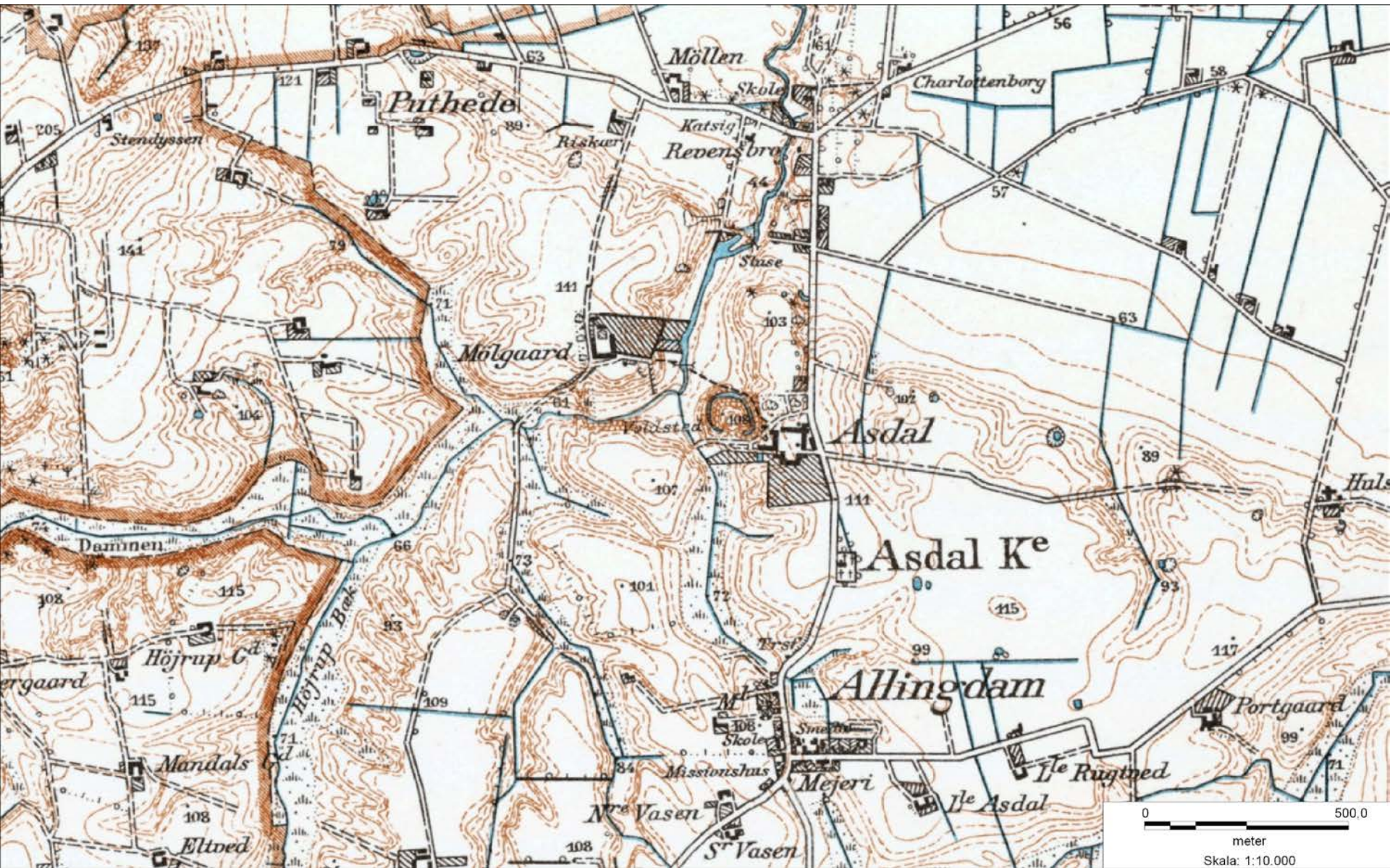


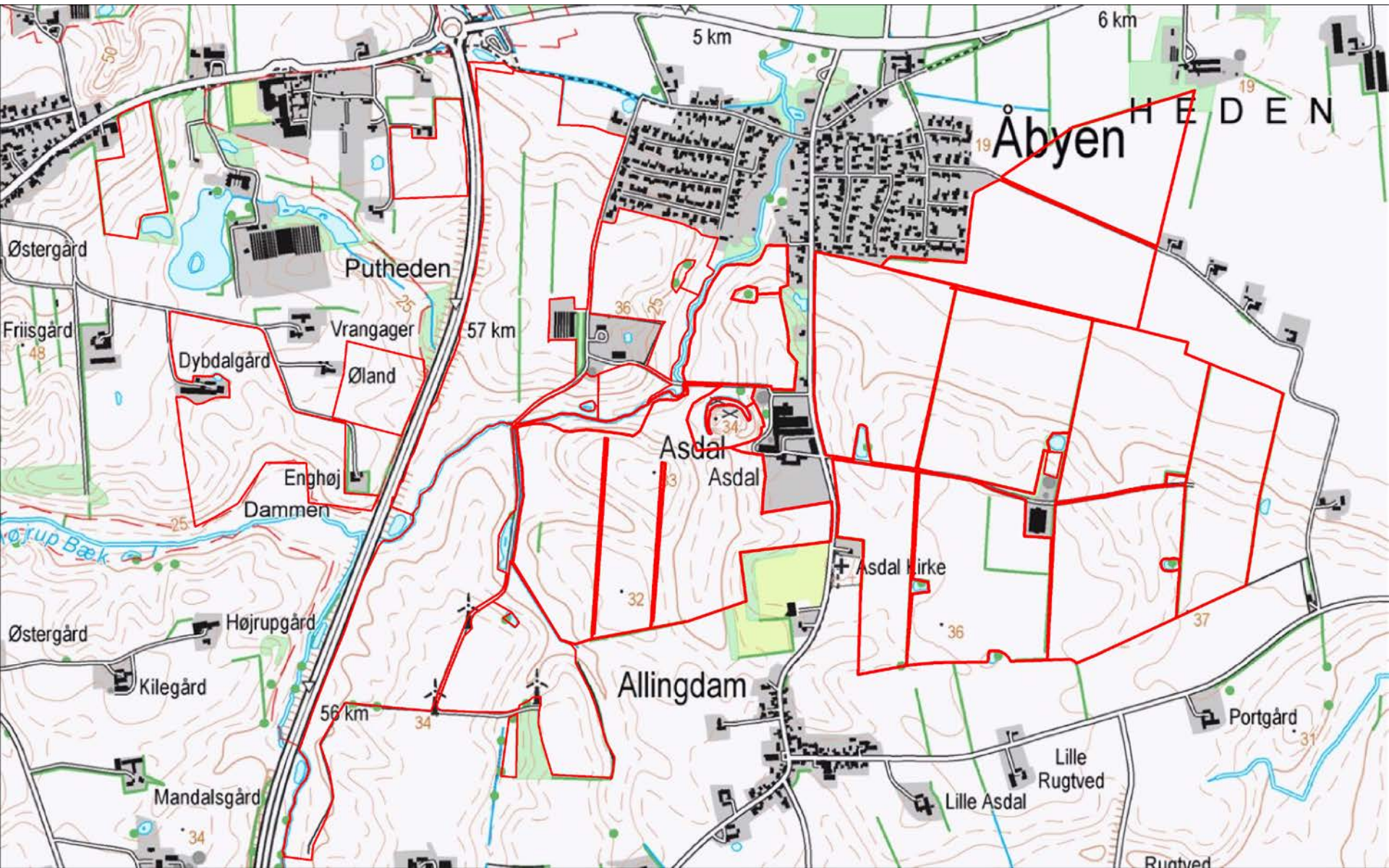
Markvandring
Torsdag den 7. maj 2015





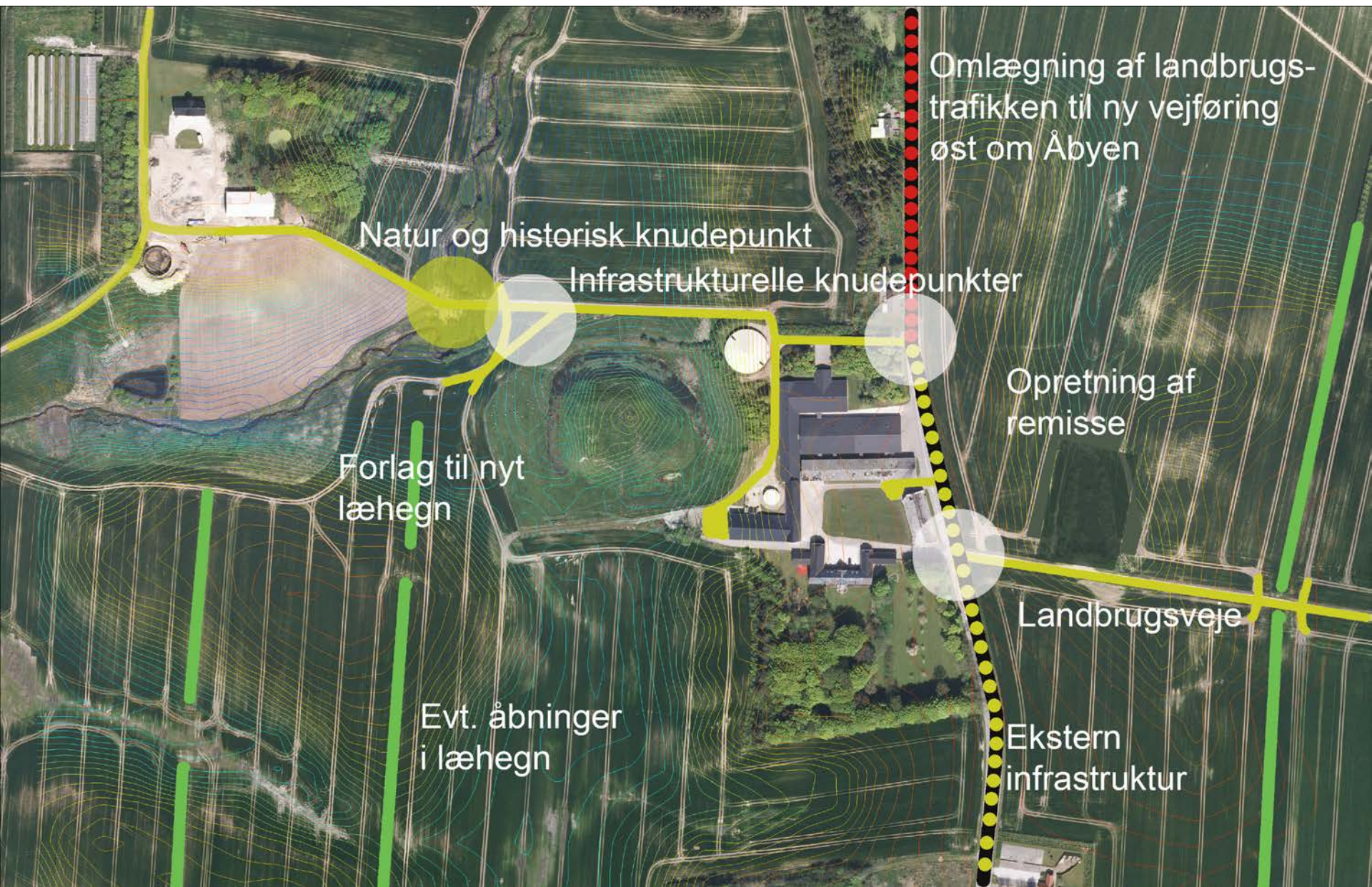








0 250 500
meters









Det udflyttede
staldanlæg

Overgangslandskabet

Hedesletten





Ridder fra 1300-tallet.

